

"I Land" Paradise

Flying China airlines to London or New York?
A journey to Taiwan is as beautiful as to Europe and America...



atop the 509 metre Taipei 101 reached by a 63km/h elevator, the night view is sparkling

Taiwanese streets are like "River of Scooters", the #1 mode of civilian's transport.

Behind the veil of modernity – the Taipei 101, the bustling city nightlife and boutique shopping areas – Taipei is a deeply ancient city.

Taipei MRT sky-train is considered in the same league as those of London and New York.

Icons of its past include the Boa-an Temple – a masterpiece of ancient Chinese artwork– and the National Palace Museum – holding the world's largest collection of over 700,000 pieces of Chinese antiquity.



boutique shopping areas



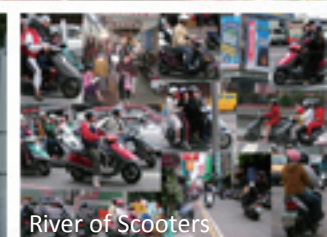
Taipei 101 63km/h elevator



The Boa-an Temple



Bullet Train



River of Scooters

Anytime check in until 30 DEC 2010

DAY USE OK!

Taipei Stopover Coupon, 1 night for

A\$55 p.p* @ 4 star Seasons Taipei

A\$70 p.p* @ 4.5 star Fullon Taipei

A\$75 p.p* @ 5 star The Landis Taipei

Your Travel Agent

ALL Taipei CBD location, close-by night markets, shopping, MRT skytrain, restaurant and the spectacular Taipei 101 – World's tallest building



Agent Enquiries: 1300 787 085 Info@formosatransel.net
WWW.VISITTAIWAN2010.COM.AU

© Design & Copyright by Formosa Travel & Holidays . All rights reserved.

* Conditions: Price is per person twin share, single supplement applies if it is a single traveler. Price is for 'Room Only" without breakfast